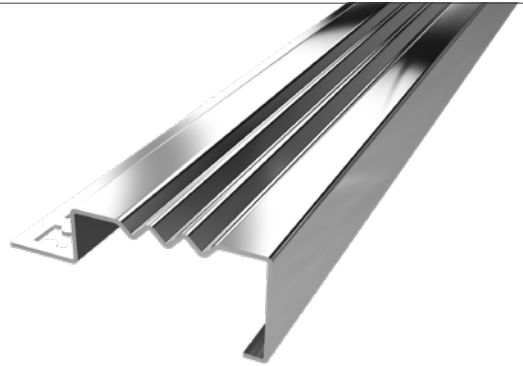
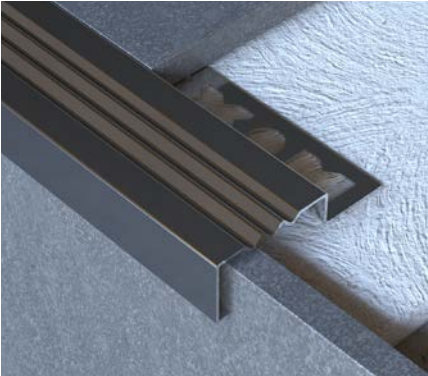


MPS-B



Stainless Stair-nose profile, is used for both protecting the ceramic surface from dashes and providing decorative image by covering mistakes on the ceramic surfaces by using on the stairs. Stainless Stair-nose profile provides a safe usage by means of anti-slip tread. It is mostly used in big open public places that especially contains several stairs and it is a favorite product by means of it's easy application. Stainless Stair-nose profile, also complies with your stair colour and design completely with wide colour options. It is produced by 304 luxury-201 economic serie stainless steel.

Technical details

Material:	Stainless Steel
Height:	8, 10, 12, 14 mm
Width:	22 mm
Length:	2500 mm 2438 mm

Color options

-  Stainless Satin
-  Stainless Mirror
-  Super Mirror
-  Gold Satin
-  Gold Mirror
-  Copper Satin
-  Copper Mirror
-  Bronze Satin
-  Bronze Mirror
-  Anthracite Satin
-  Anthracite Mirror

