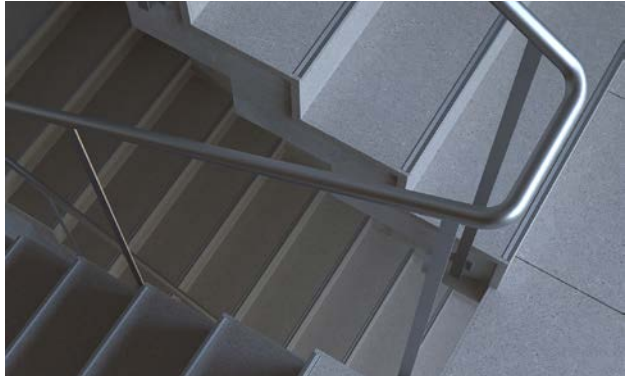


Scala-T



Scala T Aluminium Stair tread for tiles is generally used for stair steps made from granite and ceramics to avoid the poor appearance by covering the flaws on the ceramic surfaces and to prevent damages with the shock absorbing feature of itself.

Scala T Aluminium Stair tread for tiles works smoothly with all materials in thickness from 6 to 14 mm as it is being produced to be fit with any kind of materials like ceramic, granite, parquet and others.

Scala T Aluminium Stair tread for tiles harmonises with any kind of materials as it is being available in rich color alternatives while offering an easy application.

Moreover, Scala T Tiles also functions as a Aluminium Non-Slip Step Nose Profile due to the rough structure of the tile trim.

Technical details

Material:	Aluminum
Height:	10, 12, 14 mm
Width:	20, 40 mm
Length:	2700 mm

Color options

- Matt Silver
- Matt Gold
- Matt Bronze
- Matt Inox
- Matt Black
- Bright Silver
- Bright Gold
- Bright Bronze
- Bright Inox
- Bright Black
- Chrome
- Chemical Silver
- Powder Coated (All Ral Colors)

